

Q

UESTIONS

ABOUT GENETIC OR RARE DISEASES?



GET RELIABLE

A

NSWERS

from the

GENETIC AND RARE DISEASES INFORMATION CENTER

WEB

<http://rarediseases.info.nih.gov/GARD>

TOLL-FREE PHONE

888 205-2311

(TTY) 888 205-3223

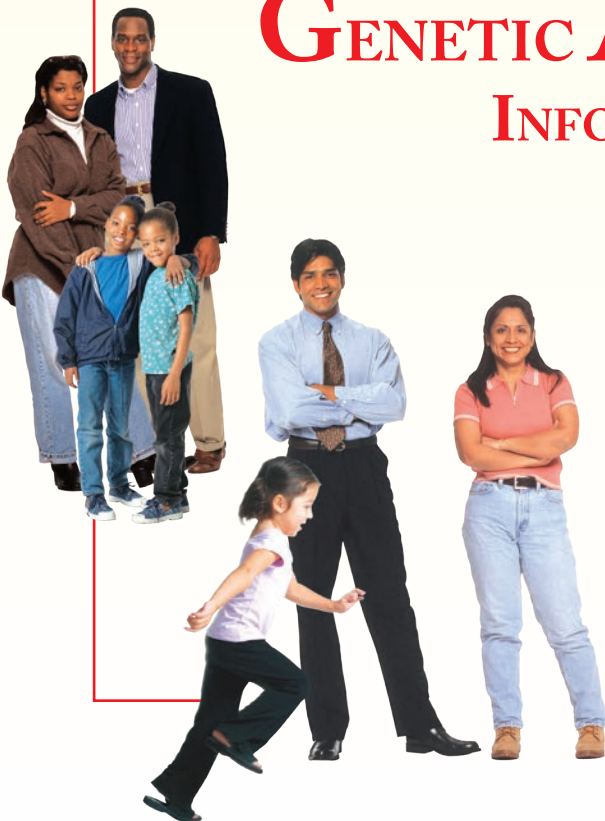
E-MAIL

GARDINFO@NIH.GOV

MAIL

P.O. Box 8126

GAITHERSBURG, MD 20898-8126



Brought to you by the Office of Rare Diseases Research (<http://rarediseases.info.nih.gov/>) – National Center for Advancing Translational Sciences, and the National Human Genome Research Institute (<http://www.genome.gov>) of the National Institutes of Health, Department of Health and Human Services.